

Evaluating The Schemes and Policies in the Usage and Management of Commons- A case of Villupuram district, Tamil Nadu

***N. Vinolia¹, Dr. Swetha Madhusudanan²**

¹*Research Scholar, Faculty of Architecture, Dr. MGR Educational and Research Institute, Chennai, India.*

²*Professor, Faculty of Architecture, Dr. MGR Educational and Research Institute, Chennai, India.*

*Corresponding Mail Id: vinolianicholas1984@gmail.com

KEYWORDS

MGNREGA (Mahatma Gandhi National Rural Employment Guarantee Act), Commons, Villages, Local Governance, Schemes and Policies and Management

ABSTRACT:

Commons are considered as a resource which plays a significant role in maintaining the ecosystems and local communities. It provides resources like water sources, forests and grazing lands which supports biodiversity and livelihoods. Moreover, commons served as a cultural practice, community cohesion and social interaction. Managing and preserving commons are necessary for sustainable improvement and livelihood of rural people. The local governance plays a major role in assigning 100 days employment for rural population. Hence, the present study attempted to evaluate the schemes and policies in managing commons in four villages of Villupuram, Tamil Nadu. Even though the conventional research concentrated on various schemes on common management, scope exists for further development. The present study explored on MGNREGA in managing commons for rural development. The current study uses both qualitative and quantitative research method to collect the data using a structured survey questionnaire from 734villagers. Further, the gathered data has evaluated with an aid of ANOVA, regression, Correlation and chi-square tests in SPSS software. For qualitative research, description analysis is examined using secondary data. The current study outcome has shown that there is an effective implementation of schemes and policies on managing commons and the Local governance plays a significant role in usage and commons management. Also, the study analysed whether the societal structure has impact or not in the commons management and usages. Additionally, the study examined the descriptive analysis for further clearance on the research objective. As per the results from current study, rural development have to adapt and evaluate various schemes and policies to establish the commons management among the rural areas.

Introduction

1.1 Background of the Study

The management of common property regime implements that different restrictions are enacted on well-defined members regarding the aspect of using local-level resources. In other terms, management of common properties entails collective regulations on both resource usage and membership and the sustaining sectioning and monitoring procedures because of that these rules and regulations could be effectually enforced (Baland & Platteau, 2003). Additionally, commons discourse growth is conventionally a phenomenon of culture which bears numerous resemblances to the movement of modern environment. The commons are also invoked to proclaim certain claims of politics. The natural commons are depletable and finite that defines forests could be clear cut and groundwater could be claimed (Bollier, 2006). Furthermore, MGNREGA (Mahatma Gandhi National Rural Employment Guarantee Act) is one of the huge streams of spending for projects on small-scale improvement in India. It has channelled in to vast range of natural resource and the interventions on livelihoods (Esteves et al., 2013).

MGNREGA remains a dynamic program that has prepared a substantial contribution to rural improvement in India. The government is committed to improving the execution and addressing the issues to support that MGNREGA continues to authorise rural India and generate a more equitable and prosperous society. Correspondingly, MGNREGA is a transformative legislation which has empowered rural India by employment and development. By offering employment, enhancing infrastructure, and empowering women, MGNREGA has helped decreased poverty, enhance living standards, and create a more vibrant and prosperous rural economy. As the program continues to

evolve and address its challenges, it will play an increasingly important role in the development of rural India (Sivasankari, Bharathi, & Reviews, 2012).

MGNREGA, one of the foremost attempts to initiate the foundation for the societal protection. In this aspect by expanding a legal guarantee for minimum 100 days wage labour a year for all village households in Indian country (Fischer & Development, 2020). This is considered as the strategy which plays a crucial role in supporting vulnerable groups to face climate issues (Béné, 2011). Secondly, these labours are utilised to help the small-scale infrastructure enhancement comprises of types of projects which have potential to decrease the exposure to numerous kinds of threats and climate risks (Biagini, Bierbaum, Stults, Dobardzic, & McNeeley, 2014) (Burney, Naylor, & Postel, 2013). Thirdly, an Act is created on decentralized architecture which provides village councils like Panchayats as a central authority to supervise its execution that aligns with increasing focus on society-based tactics for climate variation. The technique which proponents argue could support to carry about more responsive, climate support and effective (Dodman & Mitlin, 2013). Regardless broad recognition of the potential of MGNREGA to help vulnerable rural populaces faces climate change (Dhanapal, 2014).

Similarly, the Act provides 100 days of legal guarantee minimum wage labour a year to all village communities households. Furthermore, it integrates a growing level on mechanisms of social protections around global. Child benefits, public work programmes, cash transfers and government funded pensions which aims to ensure the access for conventional requirements and revenue to vulnerable people (Barrientos & Hulme, 2009) (Devereux, McGregor, & Sabates-Wheeler, 2011) (Fiszbein, Kanbur, & Yemtsov, 2014). Correspondingly, the conventional unit of MGNREGA is bestowed on applicants for the work demand. This demand is made for Gram Panchayat, a rural government institution. The terms and conditions made it mandatory for Panchayat to answer to the applicants or a work offering it among 15 days. Failing in this progress, are eligible to get unemployment allowances. A gram Panchayat president with elected councillors were allowed to take decisions on the programme execution by mutual consultation and related on ratification from familiar assemblies. Mostly, president wields the considerable amount of impacts in authentic job cards distribution which could access the people for job applies, wage cash approval and work allocation (Roy, 2015).

In the same way, in the last 9 years, MGNREGA has been implemented in 623 districts of Indian country however, it has not been shown outcomes that had been anticipated and making forward in MGNREGA objectives. Most of the researches shown that scheme has not working efficiently. Presently, previous employment scheme is merged into the MGNREGA guideline provided through the central government (Maske, 2015).

1.2 Problem Identification

The problem identified is the deficiency of understanding capacity regarding the dependence of rural people on common wealth. Here, Commons are typically mentioned to divide resources such as water, land, forest area, and some other natural resources that need mutually accomplishment by the municipality. The challenge lies in the limited knowledge, MGNREGA and consciousness about the necessity of the public on commons for their livings, cultural ethics, and common well-being. This indulgent lack can lead to the unreliable administration or exploitation of commons which have several negative extents for rural communities, atmosphere and the environment. Hence the present study demonstrates these problems and solutions integrated along with the understanding the schemes and policies that dependent of local village communities on commons.

1.3 Significance of the Study

Commons, shared resources that are mutually owned and used by certain group of people, plays a major role in supporting livelihoods and people well-being. The management of commons poses crucial challenges, requiring efficient schemes and policies to make sure their sustainable usage and equitable spread of benefits. Schemes and policies create clear boundaries and access all rights to the commons, avoiding conflicts and misuse. These are conventional tools for managing commons effectually and sustainably. Moreover, they define perfect boundaries, promote sustainable use, ensure

equity and involvement, addressing problem resolution, and offer a framework for examining and evaluation. By executing comprehensive schemes and policies, people can harness the benefits of commons while preserving them for upcoming generations.

1.3 Research Question of the Proposed study

- What is the role of local governance in the usage and management of commons?
- What are the policies and Schemes adopted in the management of commons?
- What are the societal structure influences in usage and management of commons?

1.4 Research Objective of the Proposed study

The objective of the current study is given below.

- Understanding the role of local governance in the usage and management of commons.
- Schemes and policies adopted in the management of commons.
- Influence of societal structure in the usage and management of commons.

1.5 Research Hypothesis of the Proposed study

- **H₀1:**Local governance does not play a significant role in usage and commons management.
- **H₁1:** Local governance plays a significant role in usage and commons management.
- **H₀2:**There is no effectual implementation of schemes and policies in management of commons.
- **H₁2:** There is an effectual implementation of schemes and policies in management of commons.
- **H₀3:**Societal Structure has no significant impact on usage and management of commons.
- **H₁3:** Societal Structure has significant impact on usage and management of commons.

1.6 Paper Organization

It is crucial to organize a research paper in a coherent and logical manner to efficiently communicate the research findings. The section 1 explains the background information, problem statement, objectives and significance of the research. The section 2 provides a comprehensive review of related literatures based on the topic which helps to establish the theoretical framework of the study. The section explains the research design, sampling frame, data source and data analysis utilized in the study. The section 4 deliberates results, current findings and discussions. Section 5 summarizes the main findings and final interpretation of the results. It also highlights the contribution and significance of the study.

2. Literature Review

This section provides various researches on schemes and policies of management of commons with MGNREGA in different districts of India and in Tamil Nadu. For an instance, the existing study (Sivasankari et al., 2012)has analysed the beneficiaries' awareness on MGNREGA in Tirunelveli district of Tamil Nadu. It has selected 600 respondents randomly as a sample through utilising multi-stage random sampling technique. Therefore, the findings of the existing study have been resulted that the respondents have sufficient aware in employment registration, career, workplace facilities, payments and mechanism of grievance readdressing. Additionally, the respondents have educated in higher secondary level who have much awareness on MGNREGA than other people. Similarly, the conventional study (Mahajan, Rajankar, & Journal, 2024) has demonstrated the requirements to consider ground realities and local dynamics for effective and inclusive water management. Henceforth, the motives of schemes like JSA, GDGS and Amrit Sarovar could be facilitated. But, these schemes are frequently forget after their beginning success till the upcoming water issue occurs. It has been criticized for grounded in context of local.

Correspondingly, the prevailing study (Rao & Reviews, 2019)has analysed the Indian government which has been announced PMGSY (Pradhan mantri Gram Sadak Yojana) for road building, MGNREGA for providing job for rural people and PMAY-G (Pradhan Mantri Awas Yojana Gramin) for providing houses. The prevailing study has found that the MGNREGA has been provided job for 5.12 crores households through creating above 234.25 crore people days of wages that covers 177 lakhs of works during the year of 2017-18. Consequently, conventional study (Indolia & Prasoon, 2015)has examined the new policies of government that have helped to develop the rural areas in the

country such as Garib Kalyan Yojana, PMSBY (Pradhan Mantri SurkshaBeema Yojana), APY (Atal Pension Yojna), Pradhan Mantri Krishi Sinchai Yojana, Mudra Bank Yojana, PMJJB (Pradhan Mantri Jeewan Jyoti Beema Yojana), PMKVY (Pradhan Mantri Kaushal Vikas Yojana) and PMAY (Pradhan Mantri Awas Yojana). Contrastingly, the existing qualitative study (Ali, George, & Care, 2019)has consisted of certain group discussions and interviews from females belonged to fishing community. They are the members of MGNREGA and Kudumbashree program. The results have found that the women who were participated in the MGNREGA and kudumbashree have an impact on different domains of lives of rural coastal female. Henceforth, both MGNREGA and Kudumbashree are useful for women empowerment and aiding in poverty eradication.

Similarly, the existing study (Sharma, Chatterjee, & Dehalwar, 2023)has highlighted the requirement for reforms to consider the challenges and enhance the execution of schemes, accountability and transparency. The findings of the prevailing research have concluded that MGNREGA has played major role in rural area development in India and improving the rural people livelihoods.Likewise, the traditional study (Pattenden, 2017) has discussed about the class-relational technique to NREGS (national Rural Employment Guarantee Scheme). The prevailing study has concluded with the uneven results of NREGS in the form of antagonistic relationship among labouring classes and the dominants and their integrated patterns of intermediation by the Indian state. It has been depicted in strong forms among numerous gram panchayats and villages in 2 Karnataka districts. Hence, NREGS could modify the social and political dynamics in the favour of labours that put forward pressure on payments and could improve the incomes of labouring classes.

Concomitantly, the conventional study (Natesan & Marathe, 2017) has developed MEIM (MGNREGA Implementation Efficient Model) to analyse the REGS in India. MIEM has employed DEA (Data Envelopment Analysis) to distinguish the relative efficacy of MGNREGA executing states. On the basis of funds, works implemented and completed, expenditures, job created, female beneficiaries and people completing employment of 100 days, it has captured present execution efficacy and offers idea to propel the inefficient states to be efficient. Similarly, the existing research (Srinivas, Pandyaraj, & Research, 2017)has utilised secondary data like Andhra Pradesh Government, Ministry of Rural development, Ministry of Panchayat raj official records, Government of India, Magazines and Journals. These have revealed that the Andhra's performance in the form of providing employment and creating person days to the rural households especially women to 5.5% of participatory households. Moreover, Andhra government has been created a considerable number of properties while a decade of execution in various categories. But it has been observed that the completion rate of works are poor and gradually reduced over years of execution.

2.1 Research Gap

- There is a need for an approach to address the water issues utilising the transdisciplinary lens. Additionally, the prevailing study (Ghosh & Journal, 2018) has focused on institutional and social factors impacting governance and water management to create it much inclusive.
- The prevailing study (Srinivas et al., 2017) has estimated that the executing agencies have to be committed more to implement MGNREGA in provocative manner in order to confirm 100 days of work as postulated in the Act as to look on work completion rather than work creation that led to public money wastage and corruption.
- The conventional study (Mahajan, Rajankar, & Journal, 2024) has to focus more on water commons on how the distance among policy and research could be reduced to make effective water management.

In conclusion, the literature underlines the crucial role of commons in supporting the livelihoods of dependent communities, accentuating the need for efficient schemes and policies to safeguard these valuable resources and for the rural development in India.

3. Research Methodology

3.1 Study Area

The present research focuses on 4 villages from Kandaachipuram Taluk. The area of the present study is Melvalai, Appananthai, Vedalam and VadakaraiThazhanur. These are located in Villupuram district

of Tamil Nadu. These areas are suitable for the research objectives. Hence, these villages have been chosen as the study area.

3.2 Research Design

The research design is signified as the structure of the research method to attain the motive of the study (Asenahabi, 2019). The research design is intended to give suitable and appropriate framework for a study. The important judgment and resolutions in the design progression is the decision to create concerning approach (Sileyew, 2019). The process of providing précised and a complete framework on which the research will be processed is denoted as research design. In humble words, the research design is considered as the execution of several procedures, processes and instruments to obtain data for the purpose of research. The entire framework and the research flow of current study is revealed in the research design. It incorporates the suitable way of technique for present research by answering questions. In research plan, it also encompasses a different combination of techniques and plans. The current study adopted qualitative and quantitative research approach. It incorporates the objective, logic and number stance (Baur).

The current study utilizes qualitative research methodology for congregating data through an interview from villagers. The research instrument utilized in the current research is interview process which aided to collect data regarding the research methodology and its optimization of current study (Mohajan, 2020). Qualitative method provides deep understanding of the research study problem and data of qualitative approach gives a depth to study (Dawadi, Shrestha, & Giri, 2021). Additionally, the quantitative data method is utilised for examining the data that has been collected through structured questionnaire from the respondents. The data were recorded using Excel sheet for providing study variables. The SPSS tool is used to examine the variables of the present study in Excel sheet. The results of the study is evaluated using several analysis such as ANOVA, Correlation, Coefficient, Chi-square and Regression. The figure. 1 describes the design of the present research.

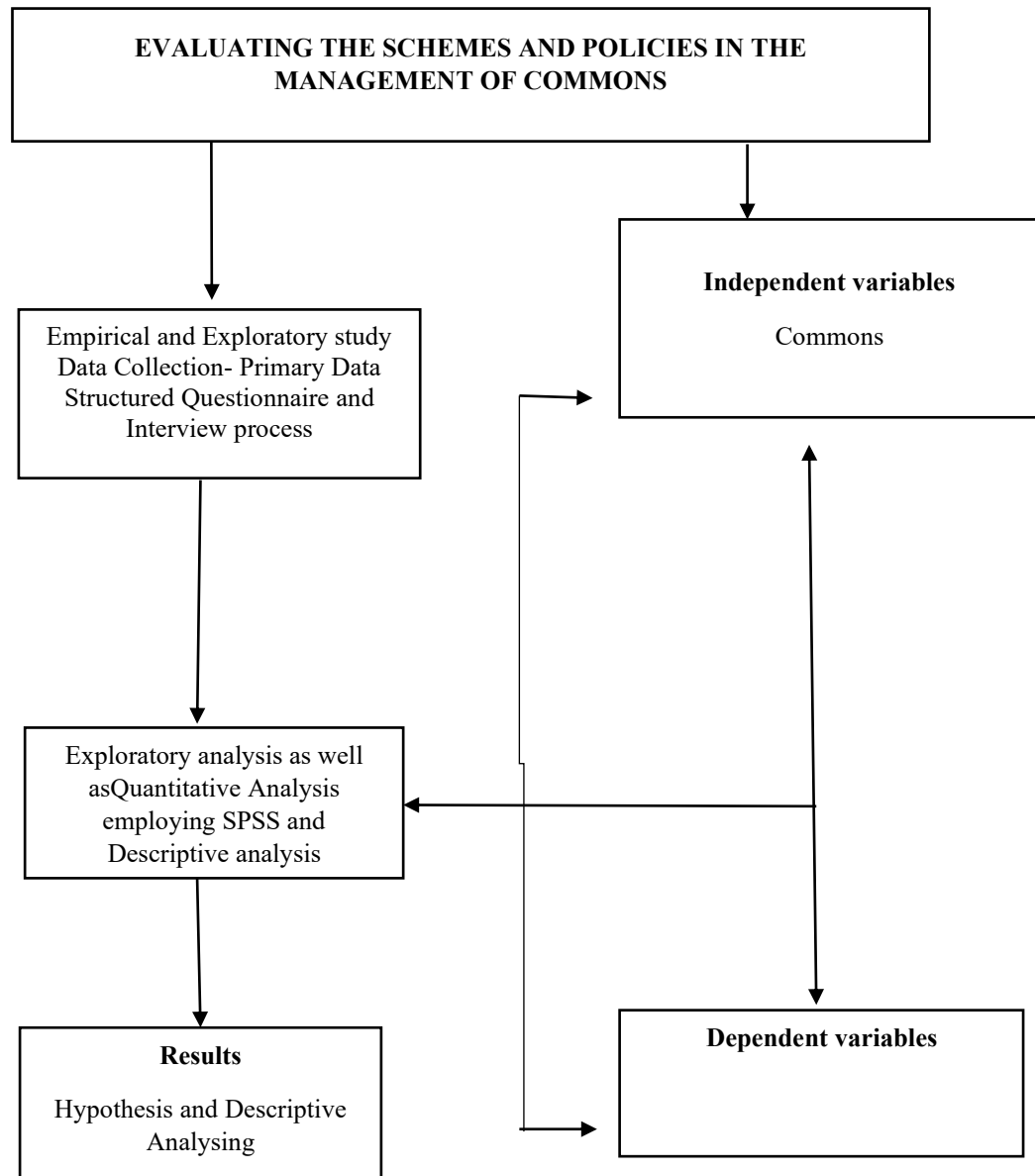


Figure. 1 Research Design

3.3 Sample Techniques

The data sampling method is crucial to pile up the data from specific populace rather than targeting on complete populace (Stratton, 2021). Thus, it is important for choosing related sample size to participate in statistical study. Therefore, the sample size aids in creating an implication related on the

collected data from sample respondents (Lakens, 2022). The sample size is nominated as the units of study units and respondents that need to be comprised for answering the questionnaire survey of the research. The current study has selected around 734 respondents. Henceforth, evaluating the suitable number of samples for creating result with the aid of statistical procedure and the present study employed purposive sampling method to amass the data from 734 villagers.

3.4 Data Collection

The process of congregating information from the respondents is defined as data collection method. The data collected were included with the processes of gathering, determining and analysing the appropriate interpretations for the proposed study using the highly standardized methods in authentication. The method of data collection is explained as the procedures of gathering information from selected respondents. The procedure involved collecting, examining and determining the detail explanations needed for the study through using high-quality methods. Basically, data accumulation could be classified into two types, namely primary and secondary data. In this present study, the primary data is utilised for the analysis phase and secondary data sourced from existing researches. The primary data collection is the process of gathering first hand data from the respondents for the research work. The procedure for collecting primary data source is accomplished using method of circulating an interview to the respondents in the form of interview. The data congregated through a primary data collection method requires to be more relevant to the proposed study. The primary data gathering is utilised to collect data from the people in the areas of Melvalai, Appanantal, Vedalam and VadakaraiThazhanur through the interview questionnaires. The secondary data is sourced from existing sources for the present study.

3.5 Research Instrument

In the present study, the data collected with the help of Interview process. The qualitative methodology embraces the interview process method to collect data regarded to the research variable from the selected respondents. The data gathered through the interview are examined with aid of thematic analysis. This methodology described the participants' emotions, opinions, meaning and experience in descriptive manner. It is related as the research of one's meaning or cases that provides data regarding to the respondents. The interview method is used by the scholar to raise questions to the chosen participants through interviews for revealing the data regarding to this topic. This method instrument is utilized to gather descriptive type data for this research. Though, there are various kinds are available to gather data for the research, the present study uses the effective methods like interview process for gathering data among the villagers and descriptive analysis using secondary data from external sources.

3.6 Data Analysis

Data analysis is a process of changing, cleaning and extracting information from processes raw data. The information extracted must be relevant information that helps in the study decision. Qualitative analysis (Rashid et al., 2021) utilises to examine the schemes and policies on managing commons. This analysis is dissimilar to quantitative analysis which focuses on numerals. However, the qualitative analysis focuses on unsuitable and insubstantial data, which is hard to collect and calculate. Generally, the qualitative analysis is descriptive nature and utilised to evaluate the subject quality rather than subject quantity. It is also defined as categorical analysis where the data can be categorised or grouped depending on the categorizations. This kind of analysis is worked with descriptions not in numerals in the estimation. The current study incorporates the qualitative research method for analysing the schemes and policies in managing commons.

3.7 Ethical Considerations

A common description lying for the ethical concern is the moralitiesacquired which are morally correct and are not harmful to any beings and are devoid of violating the terms and conditions with the law. In the aspect of research, the ethical consideration is known to be the gathering of principles which supports to carry out the overall study and research with suitable design section and practices. These can be either an informed consent or a voluntary involvement and results communication. Some of the ethical considerations include environmental responsibility, discrimination, disclosure of

a corporate, espionage and any forms of harassment. A research work might face some of ethical concerns such as confidentiality and anonymity. This respective research is much devoted and are more applicable to practical ethical concern and practices.

4. Results

4.1 Statistical analysis

Statistical analysis is important part in research which comprises demonstration, explanation, organisation and gathering of numerical data. It encompasses using several statistical techniques to derive valuable conclusion and make result based on the data.

Hypothesis 1

H₀1: Local governance does not play a significant role in usage and commons management.

H₁1: Local governance plays a significant role in usage and commons management.

One-way ANOVA

One-way ANOVA is a statistical technique used to analyse the variance between the means of two groups or more. This technique method uses one independent variable (Ross & Willson, 2017). Henceforth, the present study employs ANOVA test for determining the better results.

Table. 1 Descriptive Statistics of Apanandhal

	N	M	SD	SE	95% Confidence Interval for Mean		Min	Max
					LB	UB		
Government	11	2.00	.447	.135	1.70	2.30	1	3
Village Panchayat	99	2.59	.572	.057	2.47	2.70	1	3
UA	27	2.89	.320	.062	2.76	3.02	2	3
Total	137	2.60	.562	.048	2.50	2.69	1	3

Table. 2 ANOVA

	SOS	df	M ²	F	S
Between Groups	6.233	2	3.116	11.383	.000
Within Groups	36.687	134	.274		
Total	42.920	136			

The table. 1 and table. 2 depicts the social variables in Apanandhal village regarding whether the local governance plays an important role or not in the managing the commons. The outcome of the analysis p-value is .000 which is optimal value for the research hypothesis. The result of the ANOVA test demonstrates that the local governance (independent variable) satisfies the usage and commons management (dependent variable). Moreover, the result proves the positive hypothesis which is contrasting to the null hypothesis.

Vedalam

Table. 3 Descriptive

	N	M	SD	SE	95% Confidence Interval for Mean		Min	Max
					LB	UB		
Community people	26	4.04	.196	.038	3.96	4.12	4	5
Grama Sabha	2	3.00	1.414	1.000	-9.71	15.71	2	4
Village People	9	3.33	1.414	.471	2.25	4.42	1	5
village Panchayat	37	2.86	1.475	.242	2.37	3.36	1	4
UA	56	4.98	.134	.018	4.95	5.02	4	5
Total	130	4.05	1.263	.111	3.83	4.27	1	5

Table. 4 ANOVA

	SOS	df	M ²	F	S
Between Groups	107.455	4	26.864	34.172	.000
Within Groups	98.268	125	.786		
Total	205.723	129			

The table. 3 and table. 4 depicts the social variables in Vedalam village regarding whether the local governance plays an important role or not in the managing the commons. The result of the analysis attained p-value as .000 which is optimal value for the research hypothesis. The result test illustrates that the local governance (independent variable) satisfies the usage and commons management (dependent variable). Moreover, the result provides positive hypothesis that is against to the null hypothesis.

Table. 5 Descriptive Statistics of Vadakarai Thazhanur

	N	M	SD	SE	95% Confidence Interval for Mean		Min	Max
					LB	UB		
Government	1	2.00	2	2
Village Panchayat	67	1.78	.420	.051	1.67	1.88	1	2
UA	80	2.00	.000	.000	2.00	2.00	2	2
Total	148	1.90	.303	.025	1.85	1.95	1	2

Table. 6 ANOVA

	SOS	df	M ²	F	S
Between Groups	1.838	2	.919	11.446	.000
Within Groups	11.642	145	.080		
Total	13.480	147			

The table. 5 and table. 6 deliberates the results of ANOVA test. It has applied to determine the local governance plays major role in managing commons. The p-value of the ANOVA test is .000 which is less than .005. Therefore, the results of the current study reject the null hypothesis. Hence, it is proved that the local governance plays a significant role in usage and commons management.

Hypothesis 2

H₀2: There is no effectual implementation of schemes and policies in management of commons.

H₁2: There is an effectual implementation of schemes and policies in management of commons.

Qualitative Analysis

The present study has used secondary data for qualitative analysis. It shows whether the schemes and policies have effective implementation on management of commons. The objectives of MGNREGA are provided below.

1. To provide 100 days of manual work to each household in village areas which would resulting demand in the making of assets of considerable durability and quality.
2. To strengthen the livelihood of the poor people.
3. To ensure the social inclusion proactively.
4. To strengthen the Panchayat Raj Institutions (PRIs).

In the financial year of 2022, MGNREGA has made significant achievements which is mentioned in the below table. 7.

Table. 7 Household Availed Employment on MGNREGA (Delhi, 2022)

FY 2021-22			FY 2022-23	
Month	January 2022	February 2022	March 2022	1 st April 2022 – 15 th December 2022
Households availed employment	1.99 Crore	2.01 Crore	1.99 Crore	5.38 Crore

Under the MGNREGA scheme, 289.24 crores of people-days employment have been created for total of 11.37 crores household employment till December 15th 2022. From the table. 7, it clearly understood that the MGNREGA has effective implementation on managing commons. In January 2022, 1.99 crore of employments availed for households. It has slightly increased to 2.01 crores in February 2022. However, in the financial year of 2022-2023 from 1st April it has appeared to be 5.38 crores of availed employment. Hence, it has proved that there is an effectual implementation of schemes and policies in management of commons which is against to null hypothesis.

Moreover, the researcher has interviewed the head of the Village Panchayat. From the interview, he mentioned about the MGNREGA has allotted the 100 days employment for rural households. The work includes, cleaning of ware courses, drainage of ponds, cleaning of lakes, grazing land cleaning and forest development works are allotted for the households in rural areas. It has shown that the local governance plays a vital role in providing 100 days employment for rural households without any gender discriminations. Hence, the analysis has that there is an effectual implementation of schemes and policies in management of commons.

Hypothesis 3

H₀₃: Societal Structure has no significant impact on usage and management of commons.

H₁₃: Societal Structure has significant impact on usage and management of commons.

Regression Analysis

The regression analysis is used to describe the arithmetical value of variable. Regression is utilised to assess the relationship between the research variables (Hope, 2020). Thus, the current research used regression test to find the better results.

Apanandhal

Table. 8 Model Summary

Model	R	R Square	Adjusted R Square	Std. Error of the Estimate
1	.356 ^a	.127	.120	1.284
a. Predictors: (Constant), Community based tender y/N				

The table. 8 has deliberated the model summary of regression analysis for the hypothesis. Thus, the R square value is .127 which is above 0.50.

Table. 9 ANOVA

Model	SOS	df	M ²	F	S	
1	Regression	32.312	1	32.312	19.594	.000 ^b
	Residual	222.622	135	1.649		
	Total	254.934	136			
a. Dependent Variable: Sharing of Profit among villagers How? What? 1- common funds, 2-clan funds, 3- temple fund						
b. Predictors: (Constant), Community based tender y/N						

Table. 10 Coefficient

Model		Unstandardized Coefficients		Standardized Coefficients	t	S
		B	SE	Beta		
1	(Constant)	.739	.301		2.456	.015
	Community based tender Y/N	.584	.132	.356	4.427	.000

a. Dependent Variable: Sharing of Profit among villagers How? What?1- common funds, 2-clan funds,3- temple fund

The table. 9 and table. 10 explains the results of the regression analysis Anova and Coefficient. The test has employed to determine the factors affect the commons management. The p-value is .015 which is an optimal value for the hypothesis. Thus, both the p-values of .015 and .000 are less than .005. Therefore, the results have shown a positive hypothesis.

Vedalam

Table. 11 ANOVA

	SOS	df	M ²	F	S
Between Groups	107.455	4	26.864	34.172	.000
Within Groups	98.268	125	.786		
Total	205.723	129			

Table. 12 ANOVA b

Model		SOS	df	M ²	F	S
1	Regression	157.208	1	157.208	42.231	.000 ^b
	Residual	476.492	128	3.723		
	Total	633.700	129			

a. Dependent Variable: Sharing of Profit among villagers How? What?1- common funds, 2-clan funds,3- temple fund

b. Predictors: (Constant), Community based tender Y/N

Table. 13 Coefficient

Model		Unstandardized Coefficients		Standardized Coefficients	t	S
		B	SE	Beta		
1	(Constant)	.374	.452		.827	.410
	Community based tender y/N	1.406	.216	.498	6.499	.000

a. Dependent Variable: Sharing of Profit among villagers How? What?1- common funds, 2-clan funds,3- temple fund

The table. 11, table. 12 and table. 13 explains the results of the regression analysis ANOVA and Coefficient. The test has employed to determine whether the societal structure has significant impact on the commons management. The p-value is .410 which proves to be null hypothesis. According to the results derived, the societal structures has no significant impact on usage and management of commons. Thus, it proves that the societal Structure has no significant impact on usage and management of commons

5. Discussions

From the analysis of the collected data from the respondents have examined utilising SPSS tool and the study's inference has made. The results of the present study have proved that the local governance has played a significant role in commons management, there is an effectual implementation of schemes and policies in managing commons and the societal structure has no significant impact in managing commons.

The existing study (Sivasankari et al., 2012) has examined about the beneficiaries on MGNREGA in Tirunelveli which has resulted that the respondents have a enough awareness on employment and career. Likely, the present study has analysed the schemes and policies for managing commons by providing 100 days' work employment to the rural households.

The prevailing study (Mahajan et al., 2024) has investigated the needs for ground realities and inclusive management of water. Hence, the schemes like JSA, Amrit Sarovar and GDGS are facilitated. Consequently, the current study has evaluated various schemes and policies that help for commons management in rural regions. The classical study (Pattenden, 2017) has analysed the results of NREGS among dominants and labouring classes. It has stated that the NREGS need to modify the political and social dynamics. The present study has proved and overcome that the MGNREGA has effective impact among rural population livelihoods.

Correspondingly, the prevailing study (Srinivas et al., 2017) has used the secondary data of Andhra Pradesh government records to reveal the performance of Andhra Pradesh in terms of offering employment for rural households in different categories. Likewise, the present study has utilised secondary data which is sourced from Tamil Nadu Government record. It revealed that the MGNREGA has provided 5.38 crore availed employments for rural households in the financial year of 2022-2023. Hence, it has played a major role in proving employments.

6. Limitations of the Study

As the schemes and policies could play a major role in managing rural commons, their limitations have been identified and addressed. The present study has focused only on the Villupuram District, Tamil Nadu. Because, the study in different places and regions will provide efficient solutions in managing commons in rural areas. The present study has examined the schemes and policies on managing commons. Hence, the research findings may not be universally applicable and must be contextualized within certain geographical contexts.

7. Conclusion

Commons are known as resources which are crucial for the local and rural communities' livelihood among worldwide. These shared resources involve water courses, forest regions, fisheries and landscapes among others. It plays an important role in sustaining the communities in rural areas. MGNREGA provides 100 day employment for rural households for managing commons (Fischer & Development, 2020). Because, the rural population depends on common resources, hence the present study analysed the schemes and policies for managing commons. This reliance can be seen in various parts of the country. It found that the local governance plays a significant role in managing commons and usage. Furthermore, the present study found that there is an effectual implementation of schemes and policies on commons management. MGNREGA has played a significant role in the rural livelihoods. Finally, the study contributed to the rural development of Indian country to exaggerate the livelihoods of local communities thereby, shared common resources also protected for upcoming generations. Future research is directed on many villages in the state of Tamil Nadu for vast rural development that helps to contribute the growth of the Indian country.

REFERENCES

- Ali, H. M., George, L. S. J. J. o. F. M., & Care, P. (2019). A qualitative analysis of the impact of Kudumbashree and MGNREGA on the lives of women belonging to a coastal community in Kerala. 8(9), 2832-2836.
- Asenahabi, B. M. (2019). Basics of research design: A guide to selecting appropriate research design. *International Journal of Contemporary Applied Researches*, 6(5), 76-89.

- Baland, J.-M., & Platteau, J.-P. (2003). Economics of common property management regimes. In *Handbook of environmental economics* (Vol. 1, pp. 127-190): Elsevier.
- Barrientos, A., & Hulme, D. J. O. d. s. (2009). Social protection for the poor and poorest in developing countries: reflections on a quiet revolution: commentary. *37*(4), 439-456.
- Baur, N. Linearity vs. Circularity? On Some Common Misconceptions on the Differences in the Research Process in Qualitative and Quantitative Research.
- Béné, C. J. I. B. (2011). Social protection and climate change. *42*(6), 67-70.
- Biagini, B., Bierbaum, R., Stults, M., Dobardzic, S., & McNeeley, S. M. J. G. e. c. (2014). A typology of adaptation actions: A global look at climate adaptation actions financed through the Global Environment Facility. *25*, 97-108.
- Bollier, D. (2006). The growth of the commons paradigm.
- Burney, J. A., Naylor, R. L., & Postel, S. L. J. P. o. t. N. A. o. S. (2013). The case for distributed irrigation as a development priority in sub-Saharan Africa. *110*(31), 12513-12517.
- Dawadi, S., Shrestha, S., & Giri, R. A. (2021). Mixed-methods research: A discussion on its types, challenges, and criticisms. *Journal of Practical Studies in Education*, *2*(2), 25-36.
- Delhi, P. (2022). *Year-End Review -2022: Ministry of Rural Development*. Retrieved from <https://pib.gov.in/PressReleasePage.aspx?PRID=1887438#:~:text=Under%20Mahatma%20Gandhi%20National%20Rural,15th%20December%2C%202022>.
- Devereux, S., McGregor, J. A., & Sabates-Wheeler, R. J. I. B. (2011). Introduction: social protection for social justice. *42*(6), 1-9.
- Dhanapal, G. J. N. C. C. (2014). Climate adaptation in India. *4*(4), 232-233.
- Dodman, D., & Mitlin, D. J. J. o. I. D. (2013). Challenges for community-based adaptation: discovering the potential for transformation. *25*(5), 640-659.
- Esteves, T., Rao, K., Sinha, B., Roy, S., Rao, B., Jha, S., . . . Weekly, P. (2013). Agricultural and livelihood vulnerability reduction through the MGNREGA. 94-103.
- Fischer, H. W. J. C., & Development. (2020). Policy innovations for pro-poor climate support: social protection, small-scale infrastructure, and active citizenship under India's MGNREGA. *12*(8), 689-702.
- Fiszbein, A., Kanbur, R., & Yemtsov, R. J. W. D. (2014). Social protection and poverty reduction: Global patterns and some targets. *61*, 167-177.
- Ghosh, N. J. E., Economy, & Journal, S. t. I. (2018). On Water Governance: From a Reductionist Paradigm to a Holistic One: Combining Ecology, Economics, Engineering, and Social Sciences in a Transdisciplinary Framework for Water Governance. *1*(2), 69-72-69-72.
- Hope, T. M. (2020). Linear regression. In *Machine Learning* (pp. 67-81): Elsevier.
- Indolia, D., & Prasoan, K. J. I. J. o. A. R. (2015). An overview of policies & schemes of Govt. of India to promote rural sector & tourism. *1*(13), 775-778.
- Lakens, D. (2022). Sample size justification. *Collabra: Psychology*, *8*(1), 33267.
- Mahajan, R., Rajankar, M. J. E., Economy, & Journal, S. t. I. (2024). Inclusive Management of Our Water Commons. *7*(1), 29-46.
- Maske, S. J. I. J. o. S. D. (2015). Issues and challenges in implementation of MGNREGA: A case study from Maharashtra. *1*(1), 32-38.
- Mohajan, H. K. (2020). Quantitative research: A successful investigation in natural and social sciences. *Journal of Economic Development, Environment and People*, *9*(4), 50-79.
- Natesan, S. D., & Marathe, R. R. J. I. J. o. S. E. (2017). Evaluation of MGNREGA: data envelopment analysis approach. *44*(2), 181-194.
- Pattenden, J. J. J. o. A. C. (2017). Class and Social Policy: the National Rural Employment Guarantee Scheme in Karnataka, India. *17*(1), 43-66.
- Rao, P. S. J. I. J. o. R., & Reviews, A. (2019). Rural development schemes in India—A study. *6*(1), 1072-1076.
- Rashid, A., Rasheed, R., Amirah, N. A., Yusof, Y., Khan, S., & Agha, A. A. J. T. O. J. o. Q. I. (2021). A Quantitative Perspective of Systematic Research: Easy and Step-by-Step Initial Guidelines. *12*(9).

- Ross, A., & Willson, V. L. (2017). One-way anova. In *Basic and advanced statistical tests* (pp. 21-24): Brill.
- Roy, I. (2015). Class politics and social protection: The implementation of India's MGNREGA.
- Sharma, S. N., Chatterjee, S., & Dehalwar, K. J. T. I. J. (2023). Mahatma Gandhi National Rural Employment Guarantee Scheme: Challenges and Opportunities. *26*(1), 7-15.
- Sileyew, K. J. (2019). *Research design and methodology*: IntechOpen Rijeka.
- Sivasankari, R., Bharathi, V. J. I. J. o. M. R., & Reviews. (2012). Mahatma Gandhi National Rural Employment Guarantee Act (MGNREGA): A Study of Awareness in Tirunelveli District. *2*(9), 1490.
- Srinivas, P., Pandyaraj, K. J. I. J. o. H., & Research, S. S. (2017). Employment generation and asset creation through MGNREGA in Andhra Pradesh. *3*(3), 4-18.
- Stratton, S. J. (2021). Population research: convenience sampling strategies. *Prehospital and disaster Medicine*, *36*(4), 373-374.